

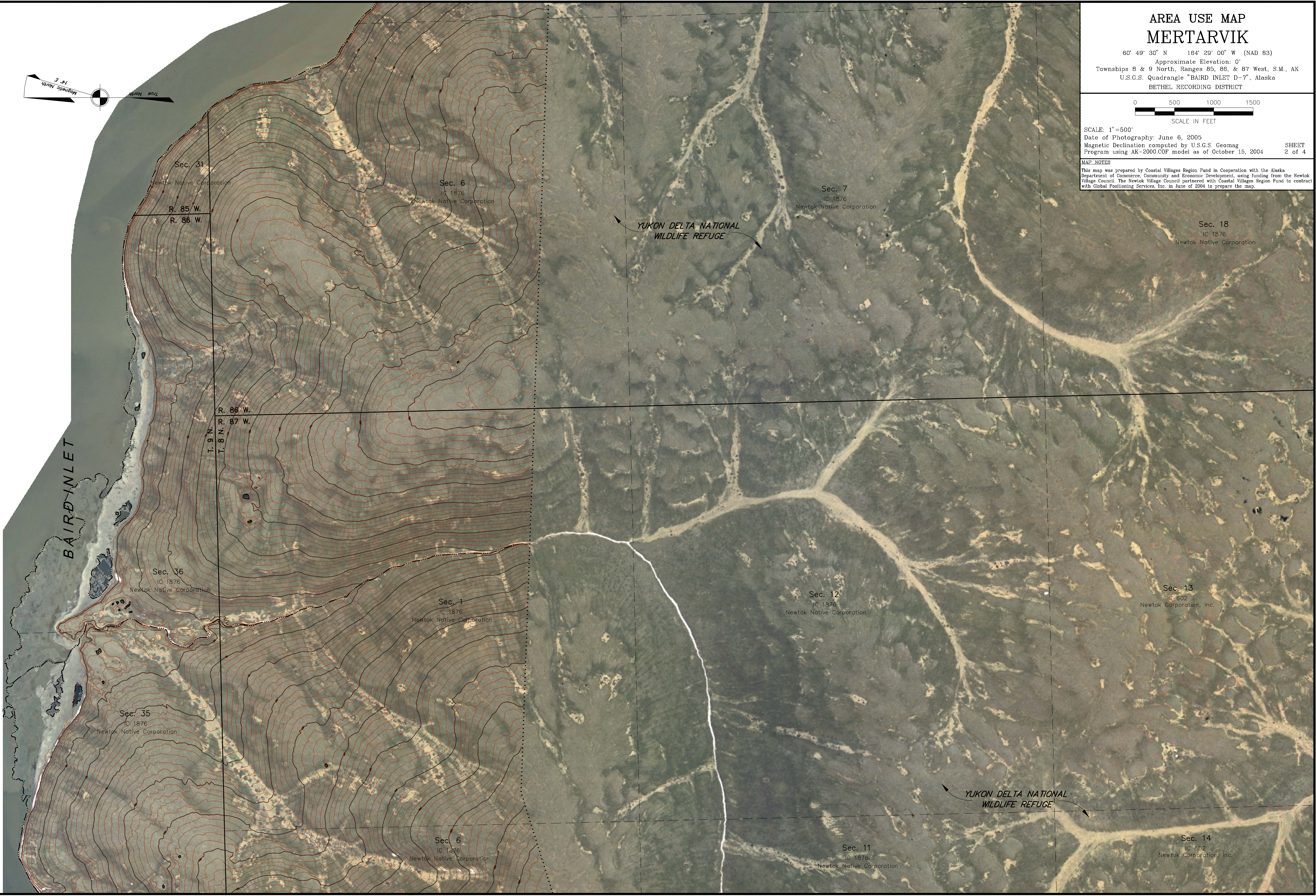
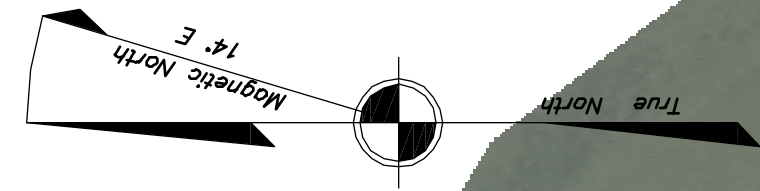
AREA USE MAP
MERTARVIK

60° 49' 30" N 164° 29' 00" W (NAD 83)
Approximate Elevation: 0'
Townships 8 & 9 North, Ranges 85, 86, & 87 West, S.M., AK
U.S.G.S. Quadrangle "BAIRD INLET D-7", Alaska
BETHEL RECORDING DISTRICT



SCALE: 1"=500'
Date of Photography: June 6, 2005
Magnetic Declination computed by U.S.G.S. Geomag Program using AK-2000.COF model as of October 15, 2004
SHEET 2 of 4

MAP NOTES
This map was prepared by Coastal Villages Region Fund in Cooperation with the Alaska Department of Commerce, Community and Economic Development, using funding from the Newtok Village Council. The Newtok Village Council partnered with Coastal Villages Region Fund to contract with Global Positioning Services, Inc. in June of 2004 to prepare the map.



Sec. 31
Newtok Native Corporation

R. 85 W.
R. 86 W.

Sec. 6
IC 1876
Newtok Native Corporation

Sec. 7
IC 1876
Newtok Native Corporation

Sec. 18
IC 1876
Newtok Native Corporation

T. 8 N.
T. 9 N.

Sec. 36
IC 1876
Newtok Native Corporation

Sec. 1
IC 1876
Newtok Native Corporation

Sec. 12
IC 1876
Newtok Native Corporation

Sec. 13
IC 602
Newtok Corporation, Inc.

Sec. 35
IC 1876
Newtok Native Corporation

Sec. 6
IC 1876
Newtok Native Corporation

Sec. 11
IC 1876
Newtok Native Corporation

Sec. 14
IC 602
Newtok Corporation, Inc.

BAIRD INLET

YUKON DELTA NATIONAL
WILDLIFE REFUGE

YUKON DELTA NATIONAL
WILDLIFE REFUGE