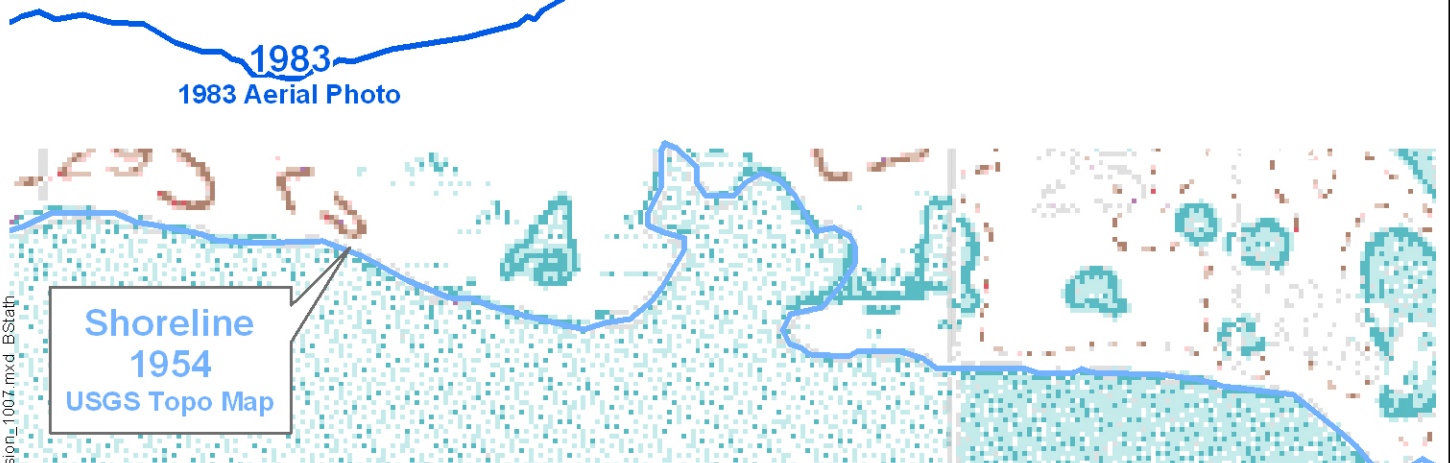
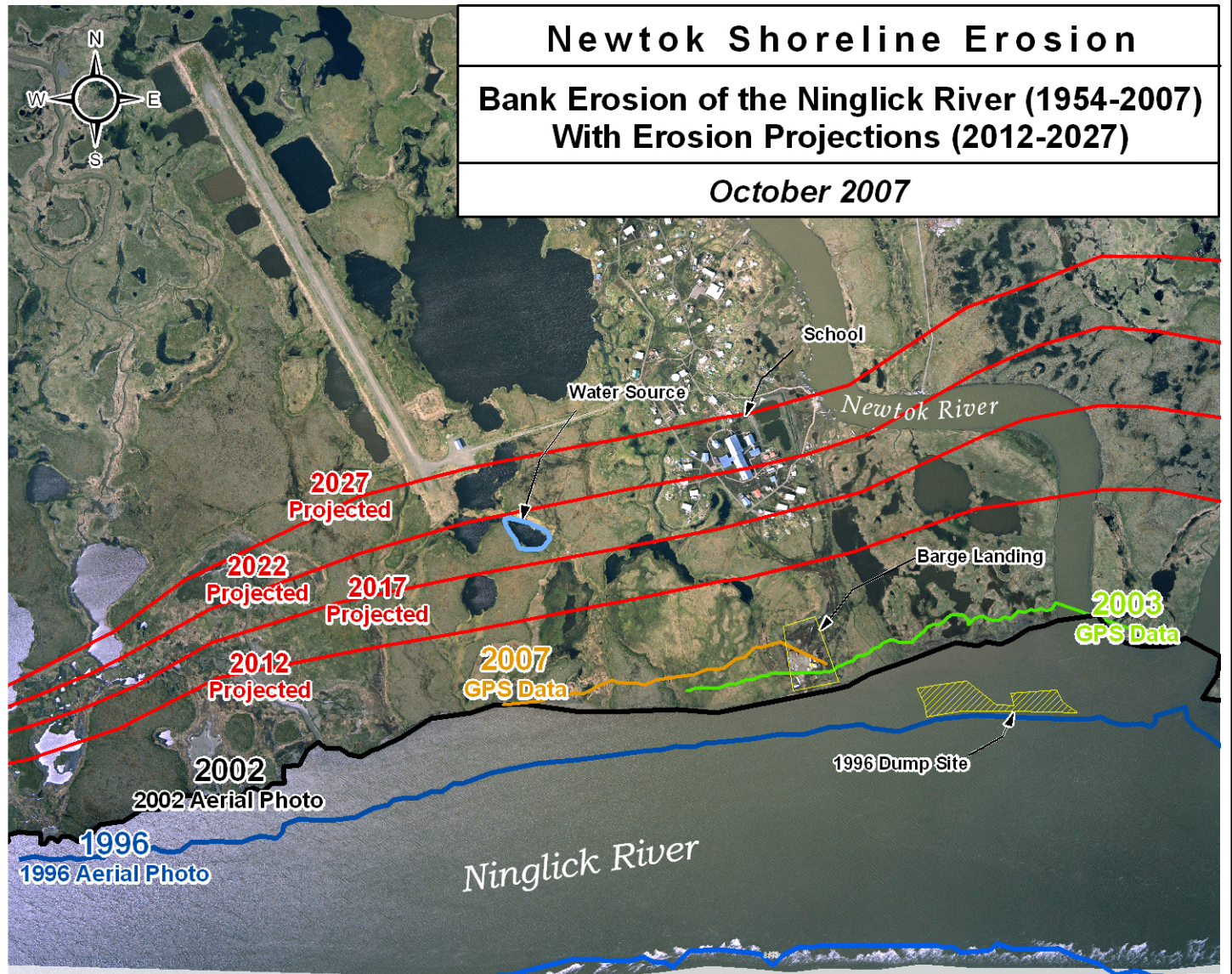


Newtok Shoreline Erosion

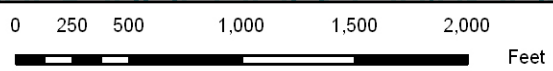
Bank Erosion of the Ninglick River (1954-2007) With Erosion Projections (2012-2027)

October 2007



ASCG
INCORPORATED

ENGINEERS • ARCHITECTS • SURVEYORS • PLANNERS



Historic shorelines digitized from USGS topographic maps and digital aerial photos. Projected shorelines are from statistically derived averages and have not been calculated based on actual Ninglick River data. Therefore, conservative erosion rate values were used for these projections, ranging from 36 ft/yr (west/downstream) to 83 ft/yr (east/upstream). Actual observations by residents and raw, non-averaged data indicate periods of much higher erosion rates. July 2003 shoreline represents a rate of 110 ft/yr.