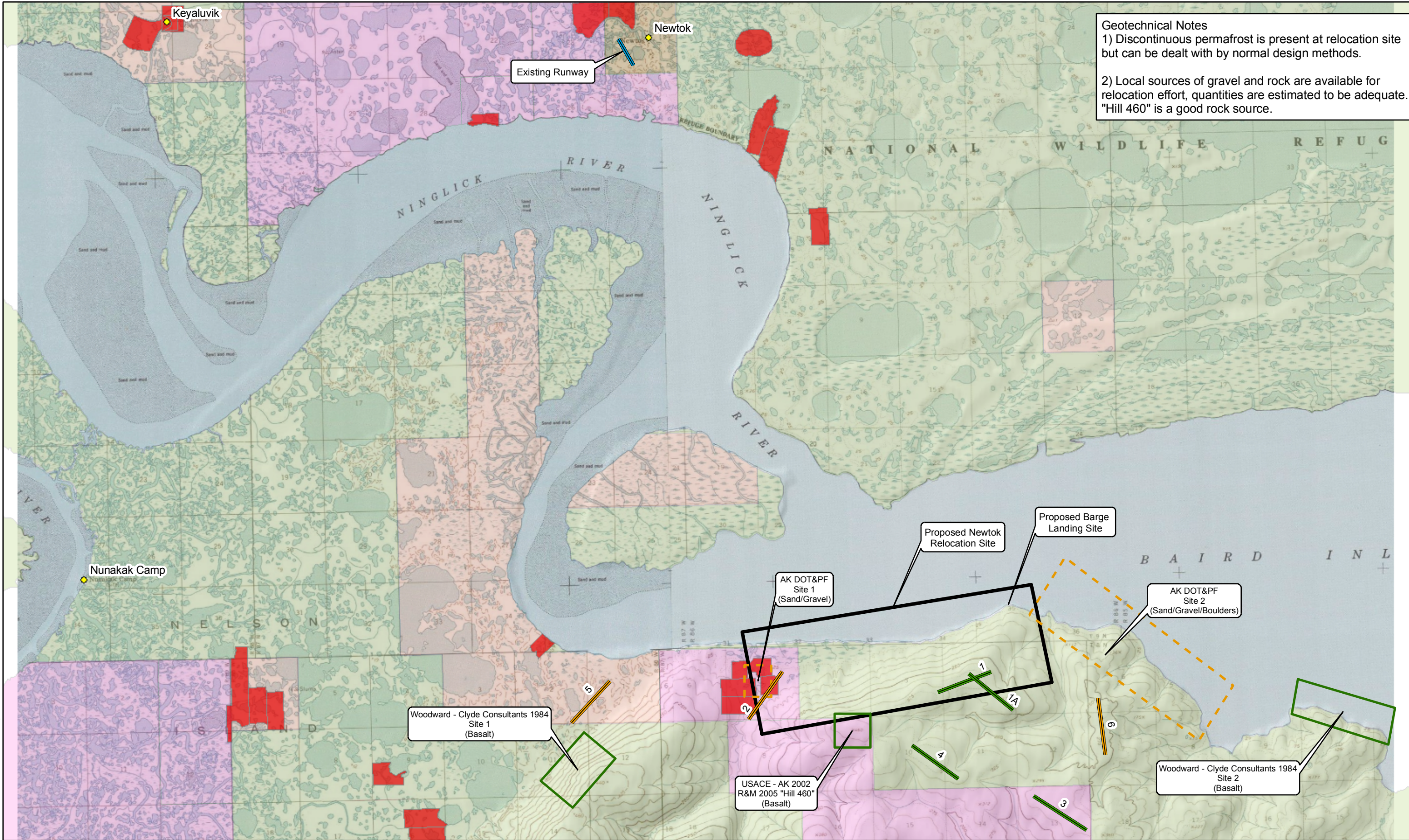


Geotechnical Notes
 1) Discontinuous permafrost is present at relocation site but can be dealt with by normal design methods.
 2) Local sources of gravel and rock are available for relocation effort, quantities are estimated to be adequate. "Hill 460" is a good rock source.



Material Source Prospect		Land Status from BLM, 2004	
	Materials Prospect Recommended for Exploration by DOT CR Materials		Fish and Wildlife Service
	Materials Prospect Previously Investigated, Not Recommended		Military
Runway			Native Patent or IC
	Preferred Runway Location		Native Selected
	Alternative Runway Location		Native Allotment per BLM, 2004

N

0 0.5 1 2 3 4 Miles

Base Map Created with TOPO! by National Geographic

Map Created by Central Region Materials
July 2006

Newtok Airport Relocation
Review of Previous Geotechnical Investigations
Summary
Figure 2

H:\Pj\CR\Reg\ARPT\Newtok Airport - xxxxx\Data\GIS\prelim planning.mxd